



*Water (MDPI)*



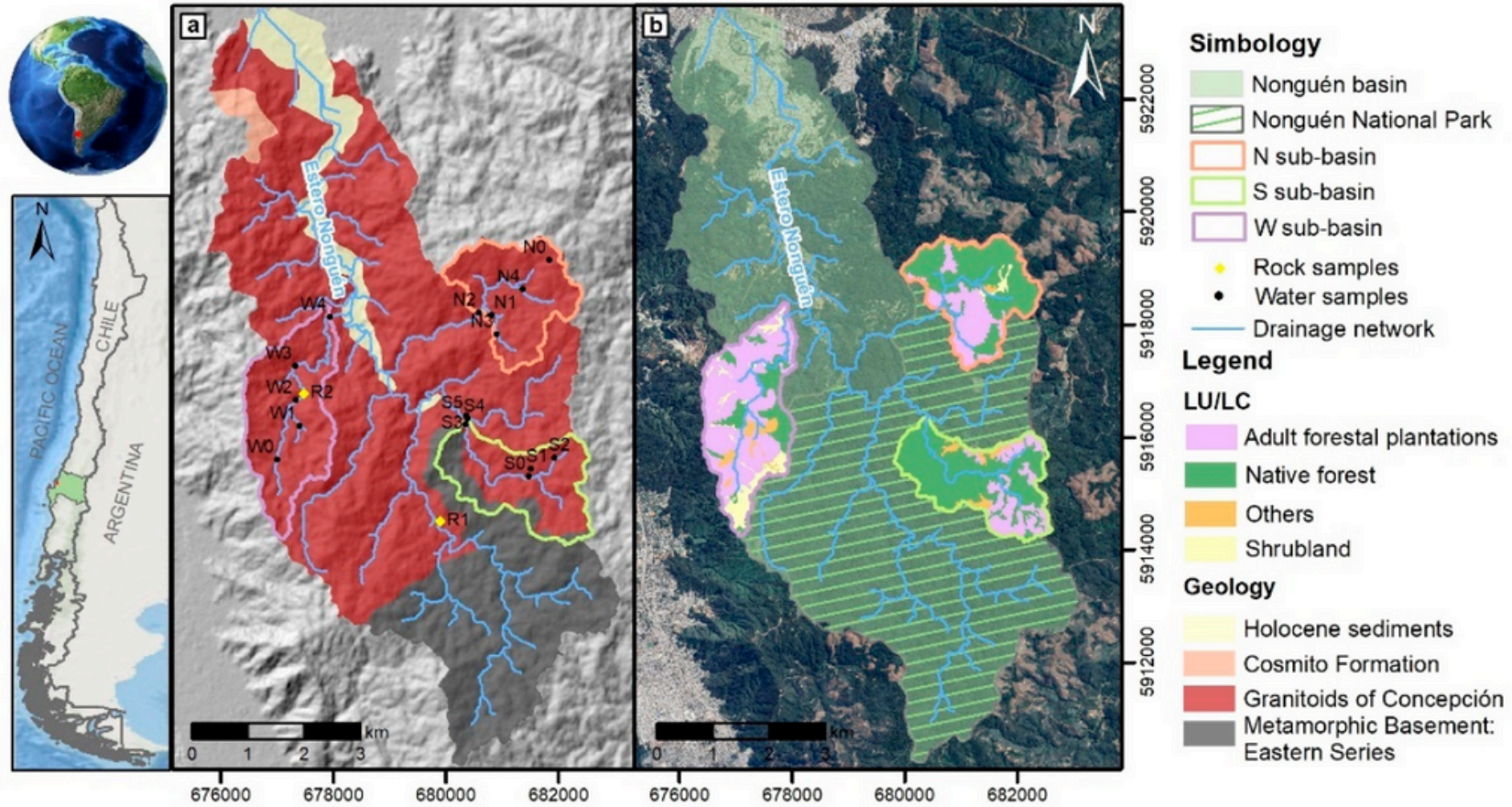
Land-Use Impacts on Soil  
Erosion: Geochemical Insights  
from an Urban Drinking  
Catchment, South-Central Chile

Dilan Campos, investigador  
junior de SMI-ICE Chile publica  
en revista científica Water



THE UNIVERSITY  
OF QUEENSLAND  
AUSTRALIA

**SMIICEChile**  
CENTRO DE EXCELENCIA INTERNACIONAL





THE UNIVERSITY  
OF QUEENSLAND  
AUSTRALIA

**SMIICEChile**  
CENTRO DE EXCELENCIA INTERNACIONAL

